

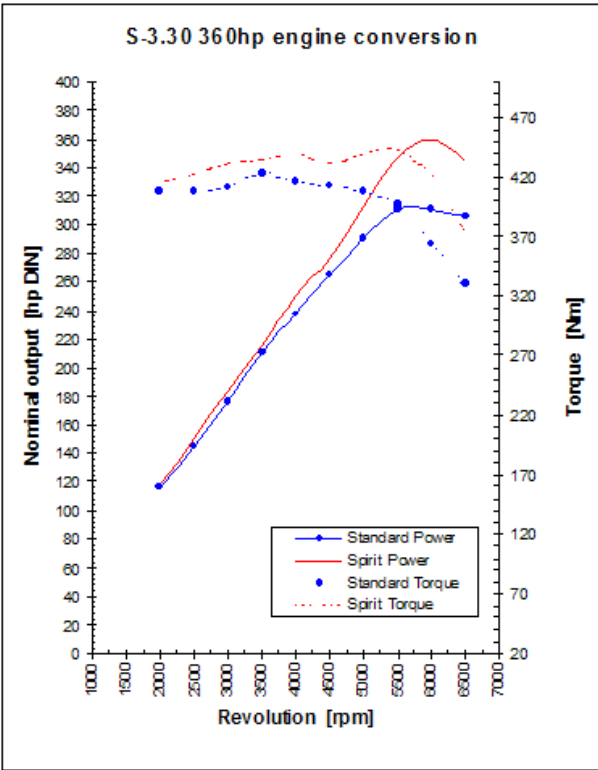
# B3-3.5 Complete Conversion by Birds



The BMW 335i is recognised as a superior sporting saloon. The twin turbo six has huge performance potential, but given that BMW cannot allow this car to steal the thunder of the M3, the engine performance has been capped to a deliberately modest level.

Birds are proud, therefore, to announce the first fully developed engine package for this car. Development of this engine was started before BMW released the car into the public domain, and the all-important engineering and durability testing has been completed in record time. Moreover, there is little doubt that whilst BMW have endowed the car with superb dynamics, there remain significant margins where performance can be improved.

We have co-ordinated all of the necessary equipment and expertise to transform the braking, handling, traction and ride quality, so that the driver is able to fully communicate with the chassis, and truly elevating the dynamics to provide the real ultimate driving experience.

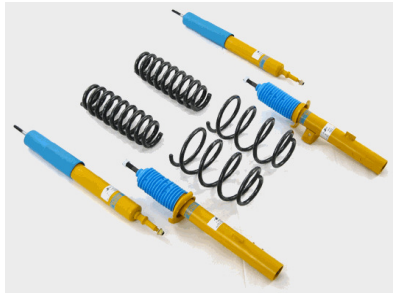


All technical work is undertaken at Birds facility in Iwer, near Heathrow, with new engine management maps individually programmed and transmitted from the factory. All conversions are properly guaranteed for both performance and longevity. Only the best will do, and only available from Birds- Ultimate BMW Performance tuning.

Underlining our place at the cutting edge of tuning technology, all complete conversions carry comprehensive warranties of 24 months, without mileage limitation.

The B3-3.5 Complete Conversion consists of the following items. We will be pleased to revise specifications and pricing to your individual requirements.

Engine	B3-3.5 366hp Engine Conversion
Differential	Quaife ATB diff
Suspension	B3 Sport Suspension
Stabilisers	B3 Anti-Roll Stabilisers



**Suspension** - The B3 Sport suspension features springs and shock absorbers that have been specifically designed and developed for UK roads. Although our suspensions have indeed been tested on the Nurburgring, they are tuned to work properly on everyday roads. No more crashing over bumps, and poor ride control typical of so-called sport suspensions. You will find our suspension to be a revelation, with corner exit speeds and traction massively improved, without compromising comfort. Ride quality and safety is paramount, and for this reason, the adoption of specially tuned gas shock absorbers and bespoke rising rate springs that have been genuinely tuned by industry professionals to achieve an impressive balance.



**Stabilisers** - B3 anti-roll stabilisers complement the chassis balance and trim. Fast drivers will immediately note the prevalent under-steer inherent in the standard BMW chassis. As a consequence we provide significantly more rear stiffness than the front, biasing away from under-steer. Again, these stabilisers have been manufactured to our own specifications. These are not off-the-shelf close-enough specification items.



**Quaife ATB Differentials** - ATB differentials increase the torque presented at the tyre contact patch with the road, which increases the force exerted on the road, which, in turn, increases the rate of acceleration. In low grip situations, the standard 335 "open" diff. allows one wheel to spin, triggering the traction control and limiting the engine power. The LSD prevents the wheel with the least grip from spinning, traction control is therefore not triggered, and the car accelerates to its true potential.

A note about tyres. All BMW cars except the M-Power cars are equipped with Run-on-flat tyres from the factory. We cannot stress how important it is to rid yourself of these performance sapping devices. In our opinion, the arguments proposed by BMW for these tyres is totally misjudged, and we know of no customer who regrets installing conventional tyres. A second note...All tyre brands do not perform similarly. Our recommendations are based on UK road conditions, and provide the best in wet weather grip and handling. If you want race style tyres, we can provide them.

As with all Birds Conversions, expert advice comes as standard. We treat all customers as individuals, and recognise that every individual has their own set of desires and criteria. We have more than 25 years experience in the BMW tuning arena, more than any other organisation in the UK, and know how to get the best performance from BMW cars. We are enthusiasts and are happy to discuss in detail every aspect of the performance of your car. Options are many, but please let us guide you toward Ultimate BMW Performance.